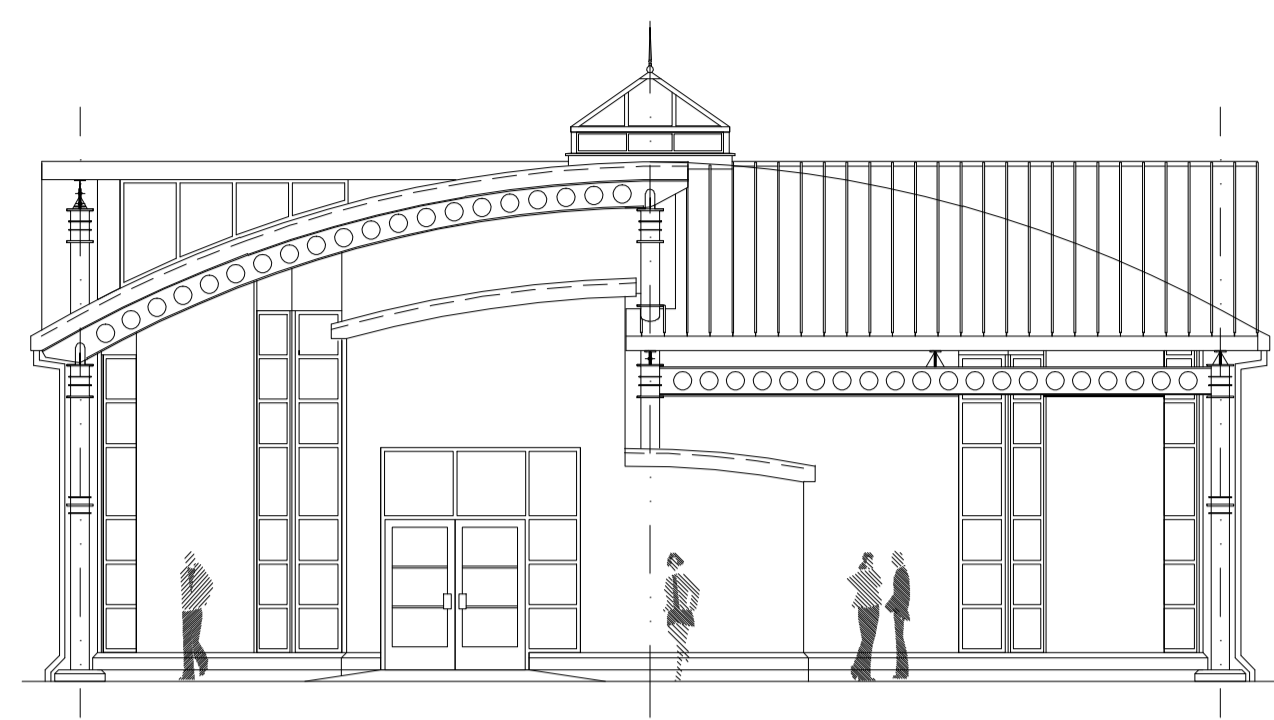
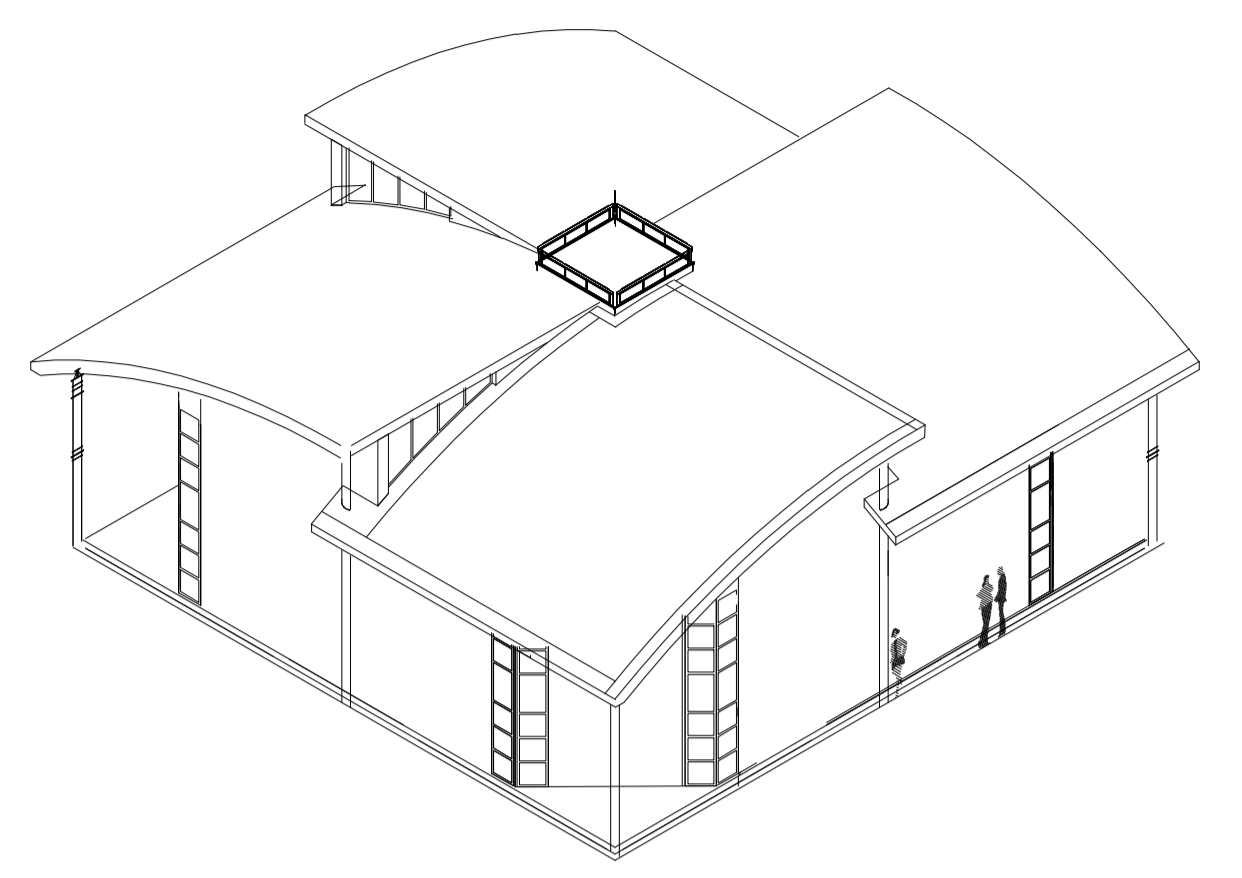


ROOF LAYOUT [1:50]



ELEVATION ON GRIDLINE A [1:100]



SPECIFICATION

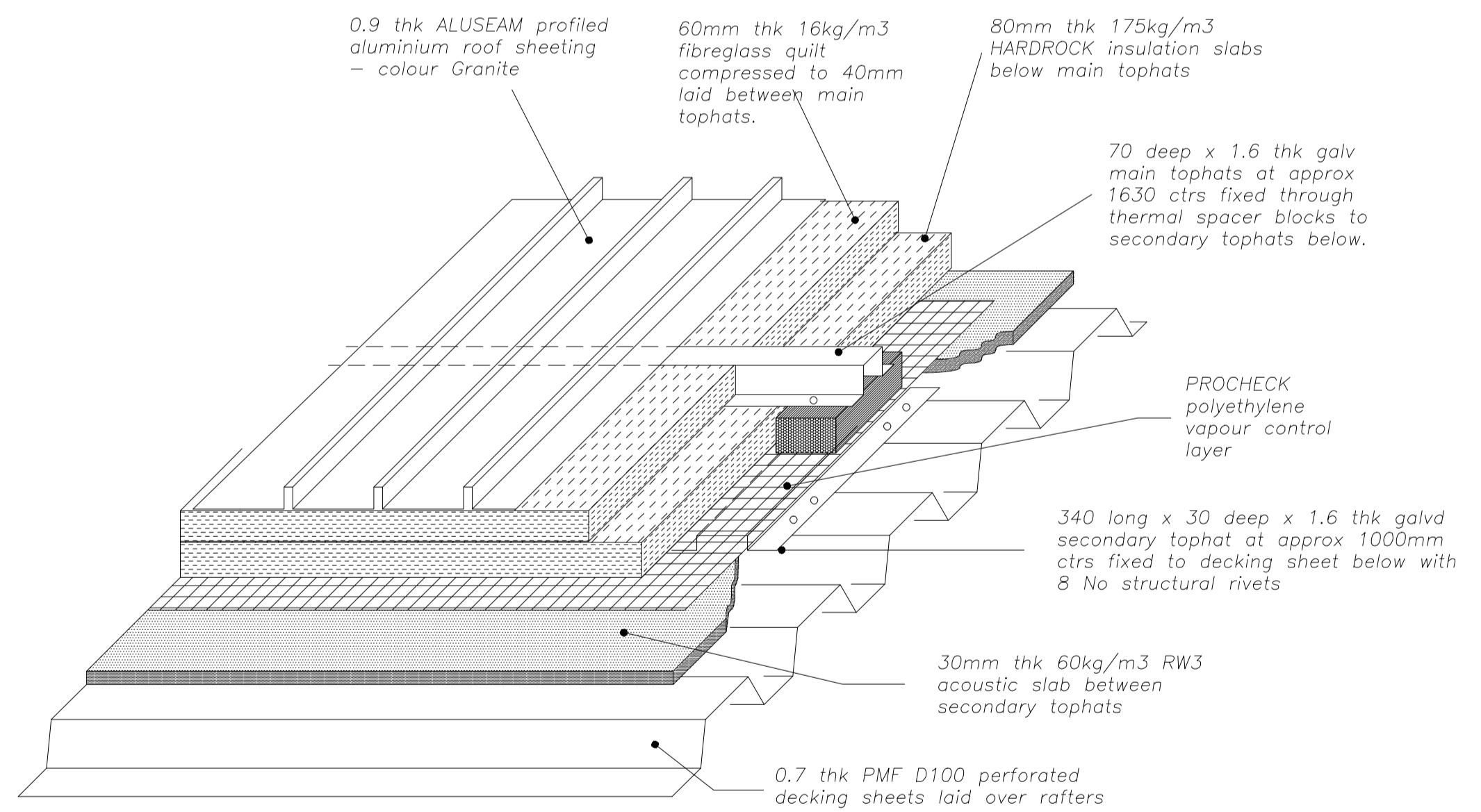
0.7 thk PMF Ltd's D100 perforated steel sheet (colour Bright White) fixed perpendicular to rafters with MXL38 teks through each trough to every rafter (Stitch sidelaps at 450mm ctrs with SL2x20 teks). Fix 1.6 thk galvd secondary top hats at ctrs shown on plan to D100 decking with eight No Bulbrite RV 6603-9-6W structural rivets to top of decking corrugations.

Lay 30mm thk RW3 Acoustic slab between top hats and overlay all with PROCHECK membrane (all laps, abutments & penetration to be sealed with IDL0311 mastic tape).

Install 70mm deep galvd main top hats at max 1633mm ctrs perpendicular to secondary top hats. Fix through 50mm deep HD PUR thermal blocks to each secondary top hat with four No SD3/5-T15-5.5x70 teks per connection.

Lay 80mm deep HARDROCK insulation slabs under 70mm main top hats and 60mm thk (condensed to 40mm) fibreglass quilt between spacers.

Sheet over with PMF Ltd's ARS coated 0.9 thk aluminium ALUSEAM secret fix system (colour BS00A05 - Granite) as details and Manufacturer's Site Installation Guide.



ROOF BUILD-UP

S & J Roofing Ltd
 APEX HOUSE KINGSFIELD LANE
 LONGWELL GREEN BRISTOL BS15 6DL
 TEL. 0117 960 4161
 FAX. 0117 935 2084

Rev. A Detail marks for 213 & 214 added. 6/4/99

CONTRACT	New Library, The Royal School, Haslemere, Surrey		
CLIENT	Matrix R		

TITLE	Roof Layout & Specification		
SCALE	1:50	1:100	DWG
DATE	March 99	BY Kc	CHK Dr
			1472-101
			REV
			A